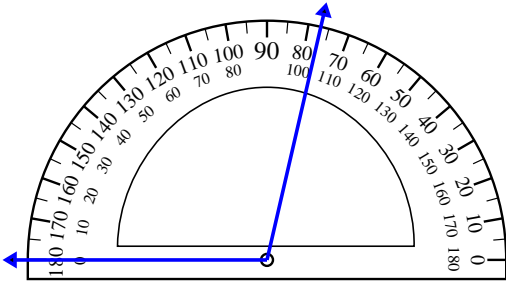


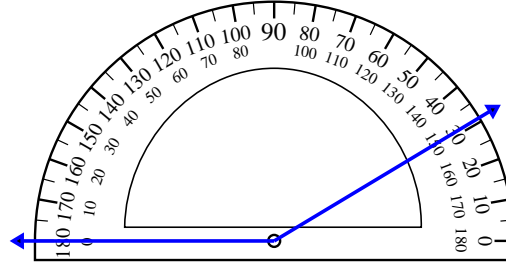


Usa il goniometro per determinare ogni angolo.

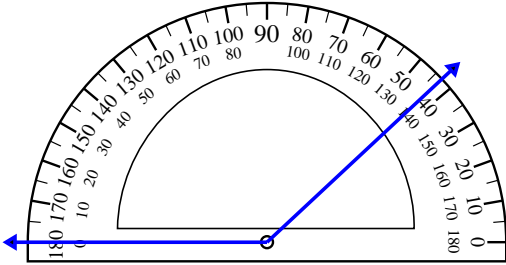
1)



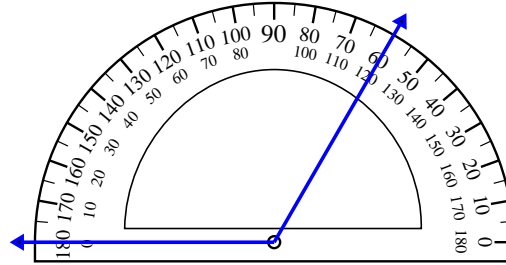
2)



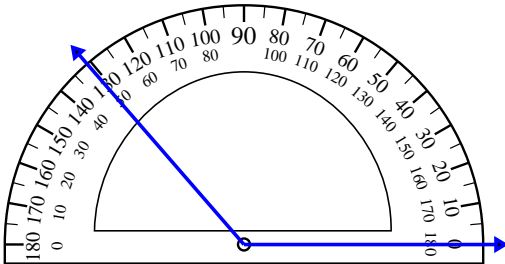
3)



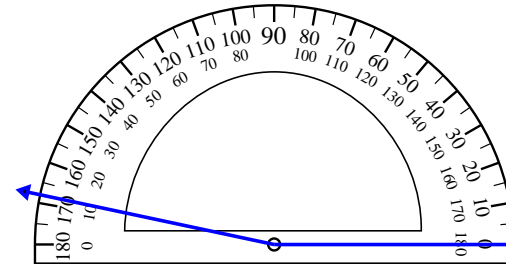
4)



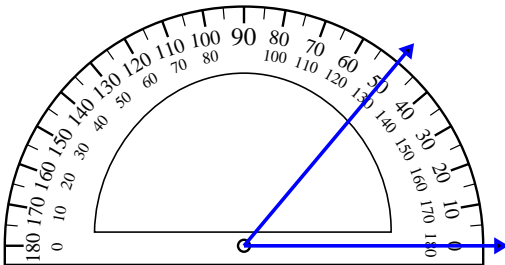
5)



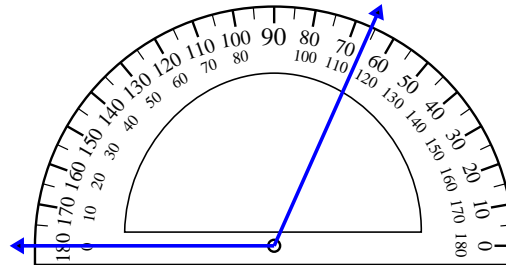
6)



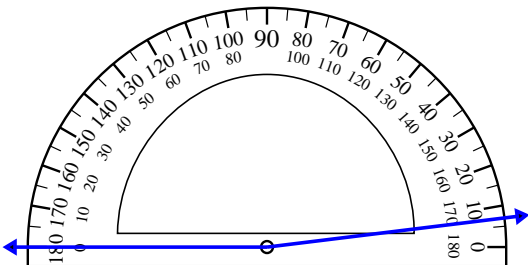
7)



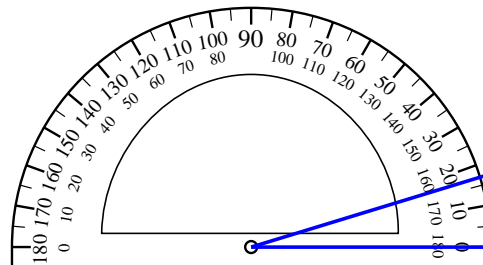
8)



9)



10)



Risposte

1. _____

2. _____

3. _____

4. _____

5. _____

6. _____

7. _____

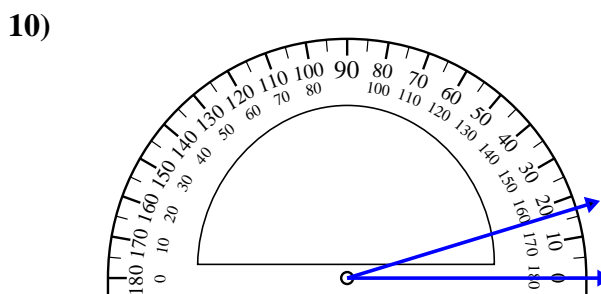
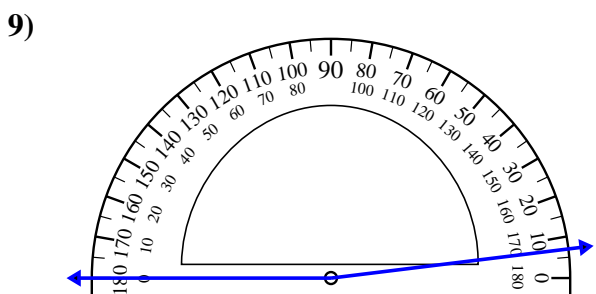
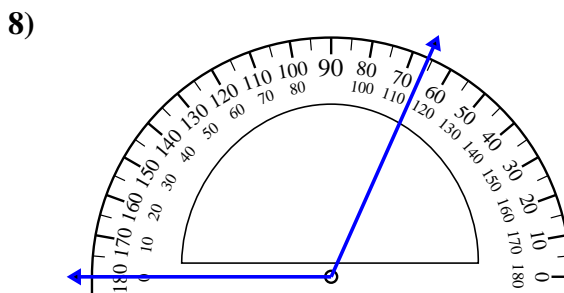
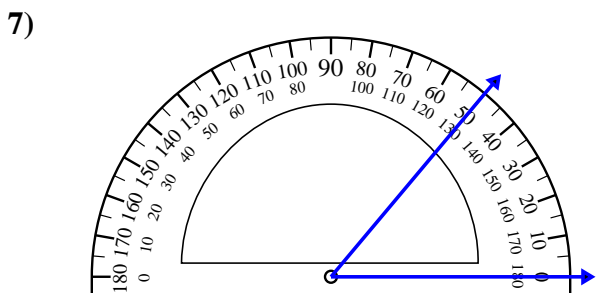
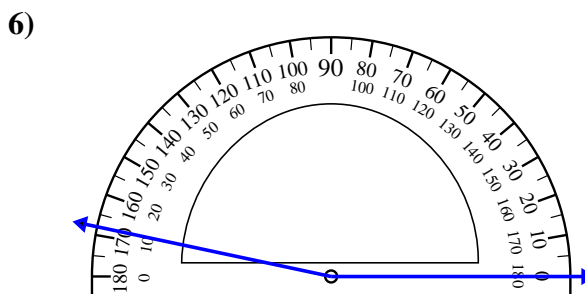
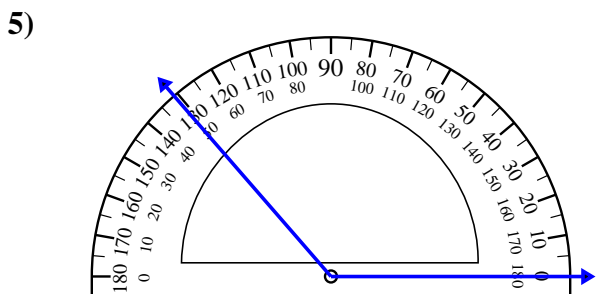
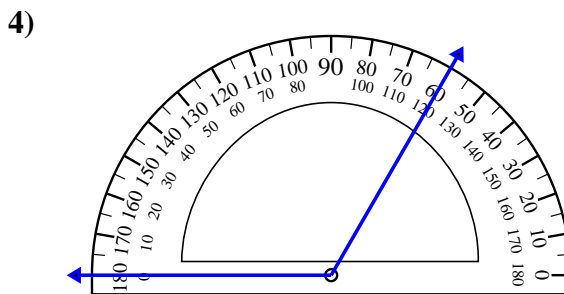
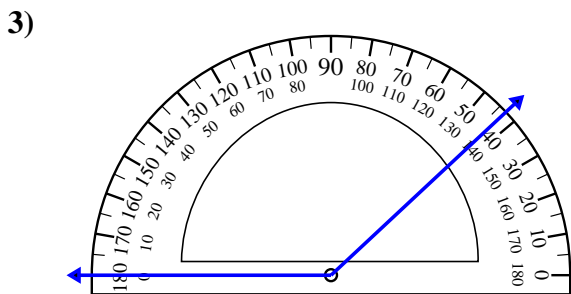
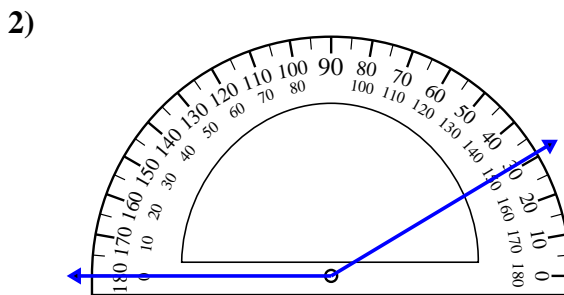
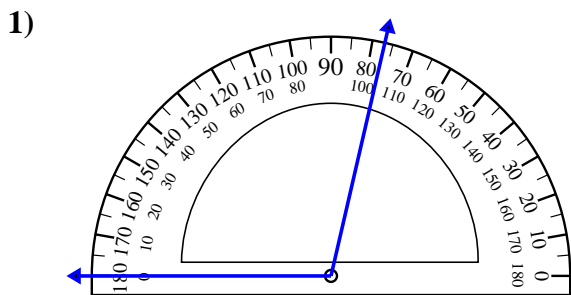
8. _____

9. _____

10. _____



Usa il goniometro per determinare ogni angolo.



Risposte

1. 103°
2. 149°
3. 137°
4. 120°
5. 131°
6. 168°
7. 50°
8. 114°
9. 173°
10. 17°