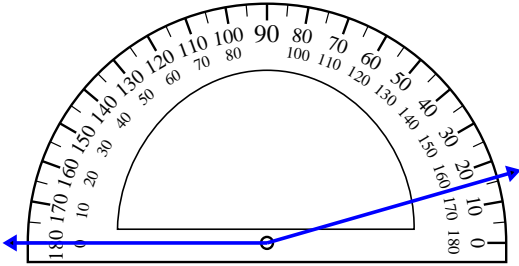


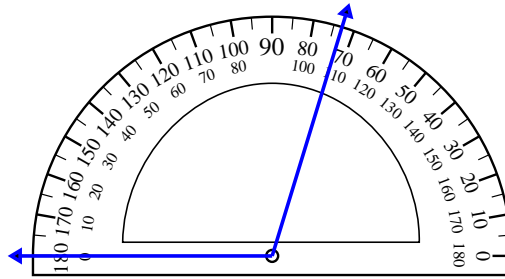


Usa il goniometro per determinare ogni angolo.

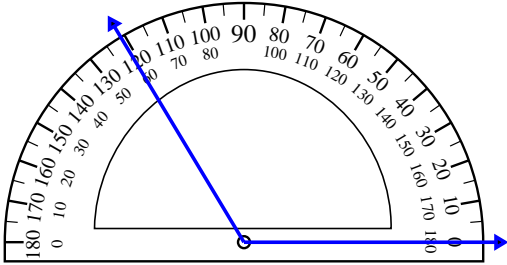
1)



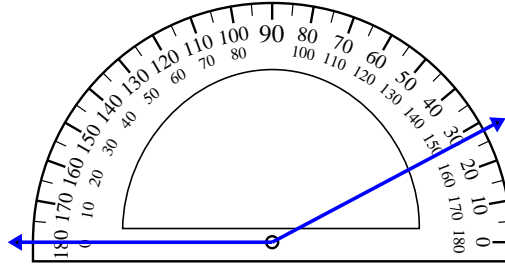
2)



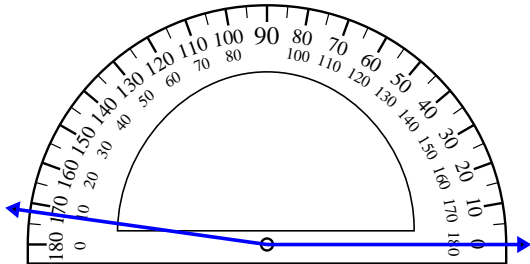
3)



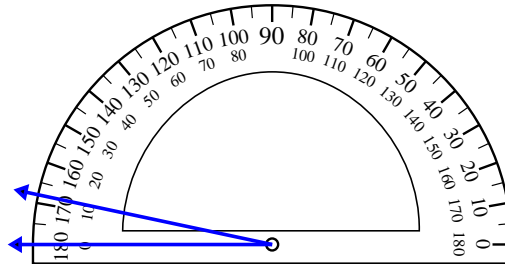
4)



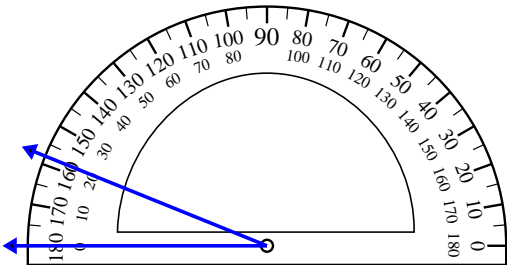
5)



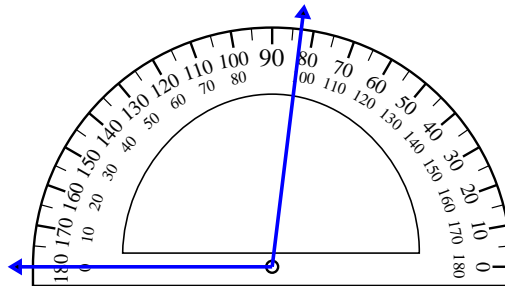
6)



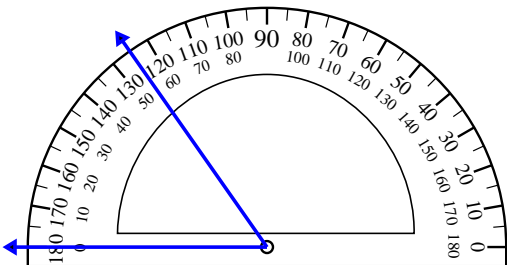
7)



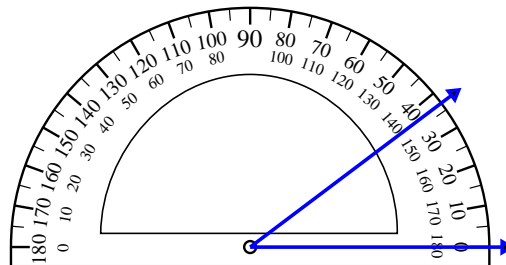
8)



9)



10)



Risposte

1. _____

2. _____

3. _____

4. _____

5. _____

6. _____

7. _____

8. _____

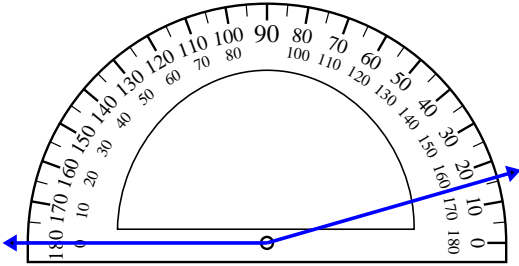
9. _____

10. _____

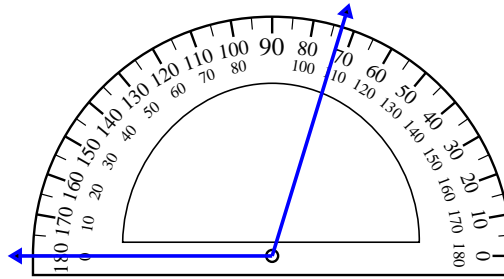


Usa il goniometro per determinare ogni angolo.

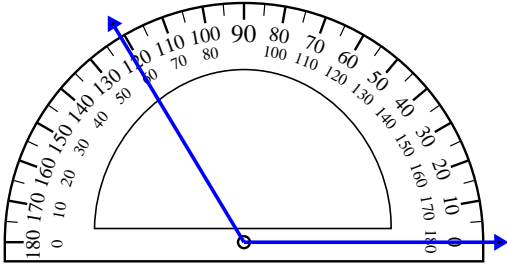
1)



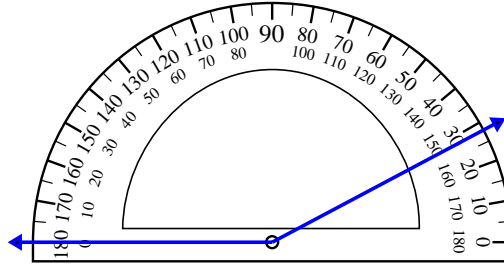
2)



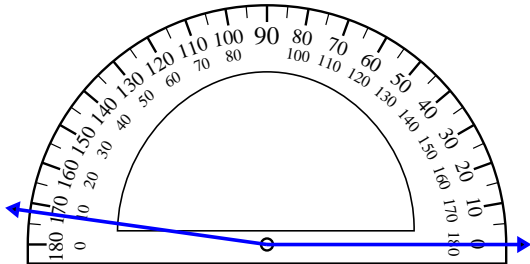
3)



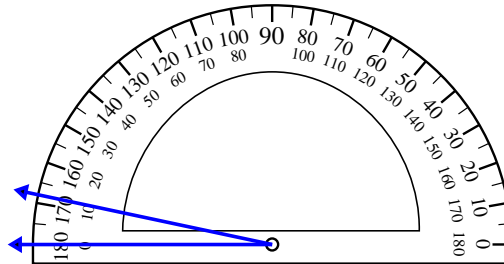
4)



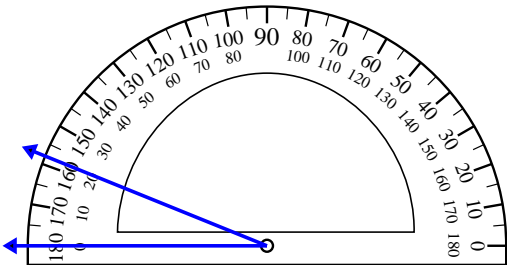
5)



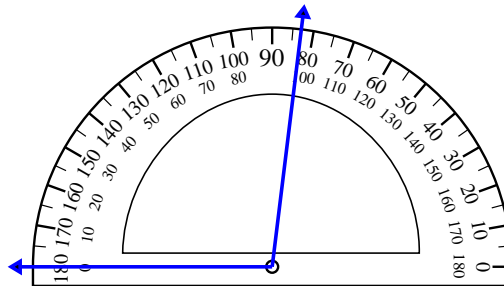
6)



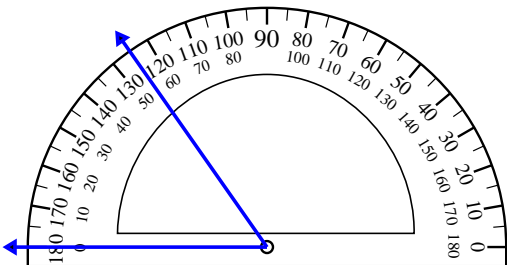
7)



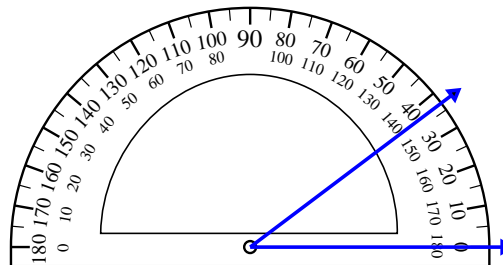
8)



9)



10)



Risposte

1. 164°
2. 107°
3. 121°
4. 152°
5. 172°
6. 12°
7. 22°
8. 97°
9. 55°
10. 37°