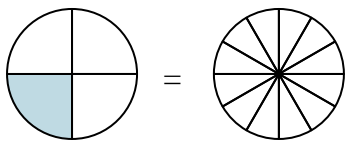


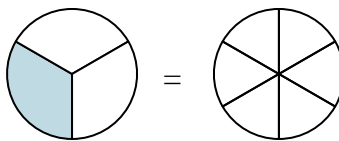


Colora la rappresentazione grafica per trovare la frazione equivalente.

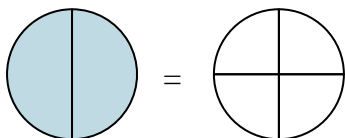
Es) $\frac{1}{4} = \frac{3}{12}$



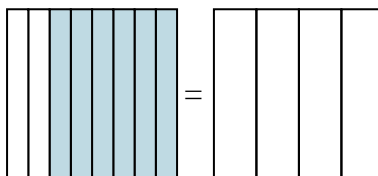
1) $\frac{1}{3} =$



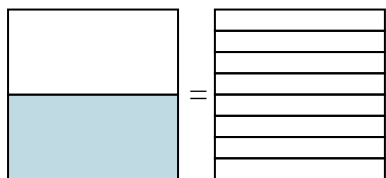
2) $\frac{2}{2} =$



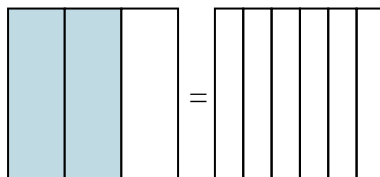
3) $\frac{6}{8} =$



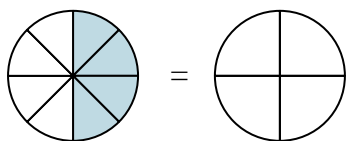
4) $\frac{1}{2} =$



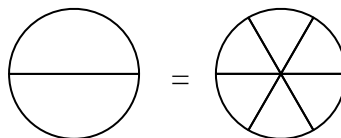
5) $\frac{2}{3} =$



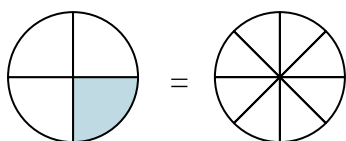
6) $\frac{4}{8} =$



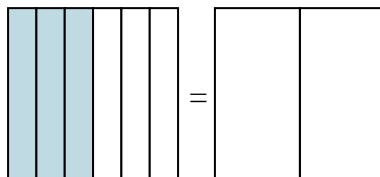
7) $\frac{0}{2} =$



8) $\frac{1}{4} =$



9) $\frac{3}{6} =$

**Risposte**Es. $\frac{3}{12}$

1. _____

2. _____

3. _____

4. _____

5. _____

6. _____

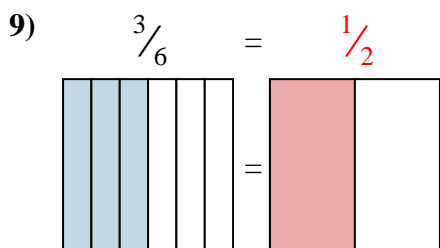
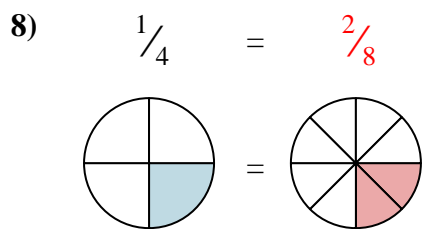
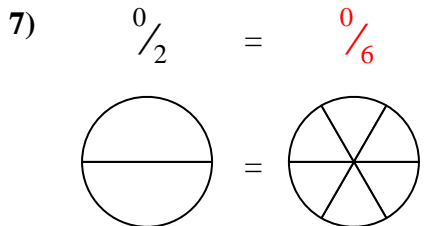
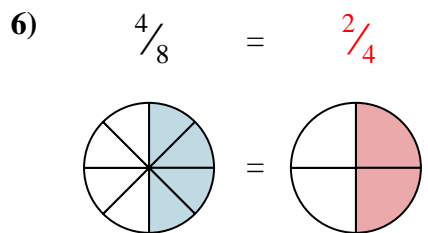
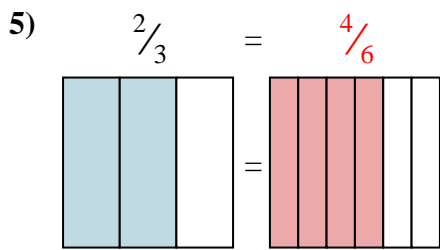
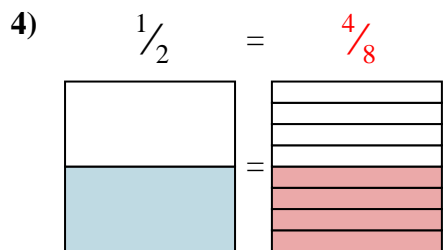
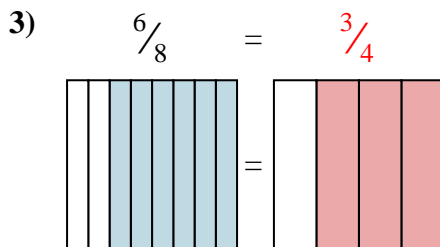
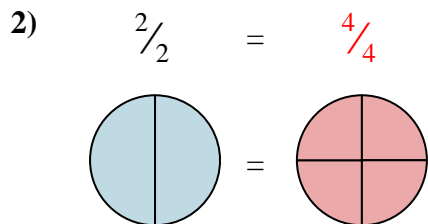
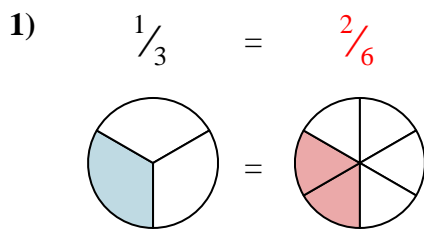
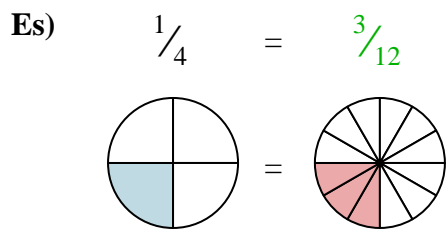
7. _____

8. _____

9. _____



Colora la rappresentazione grafica per trovare la frazione equivalente.

**Risposte**

- Es. $\frac{3}{12}$
1. $\frac{2}{6}$
2. $\frac{4}{4}$
3. $\frac{3}{4}$
4. $\frac{4}{8}$
5. $\frac{4}{6}$
6. $\frac{2}{4}$
7. $\frac{0}{6}$
8. $\frac{2}{8}$
9. $\frac{1}{2}$